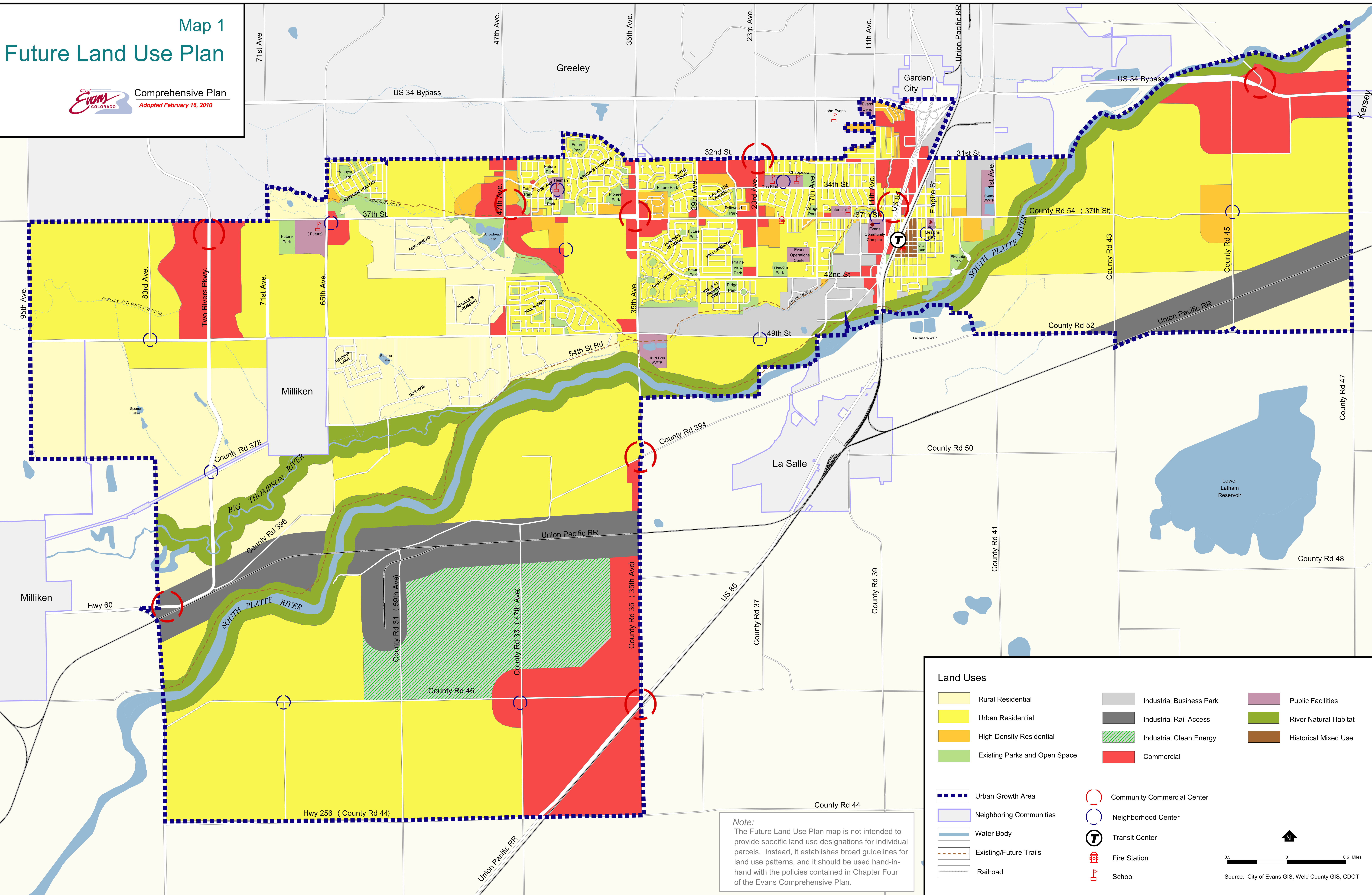


Map 1 Future Land Use Plan

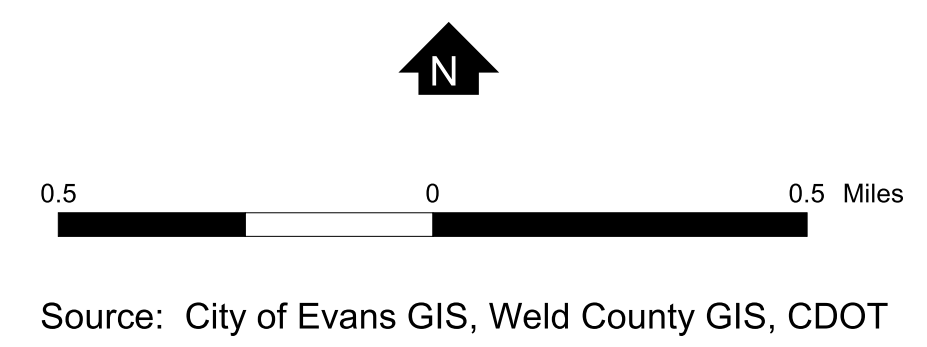
City of **EVANS** COLORADO
Comprehensive Plan
 Adopted February 16, 2010



Note:
 The Future Land Use Plan map is not intended to provide specific land use designations for individual parcels. Instead, it establishes broad guidelines for land use patterns, and it should be used hand-in-hand with the policies contained in Chapter Four of the Evans Comprehensive Plan.

Land Uses

- | | | |
|-------------------------------|--------------------------|-----------------------|
| Rural Residential | Industrial Business Park | Public Facilities |
| Urban Residential | Industrial Rail Access | River Natural Habitat |
| High Density Residential | Industrial Clean Energy | Historical Mixed Use |
| Existing Parks and Open Space | Commercial | |
-
- | | |
|-------------------------|-----------------------------|
| Urban Growth Area | Community Commercial Center |
| Neighboring Communities | Neighborhood Center |
| Water Body | Transit Center |
| Existing/Future Trails | Fire Station |
| Railroad | School |



Source: City of Evans GIS, Weld County GIS, CDOT